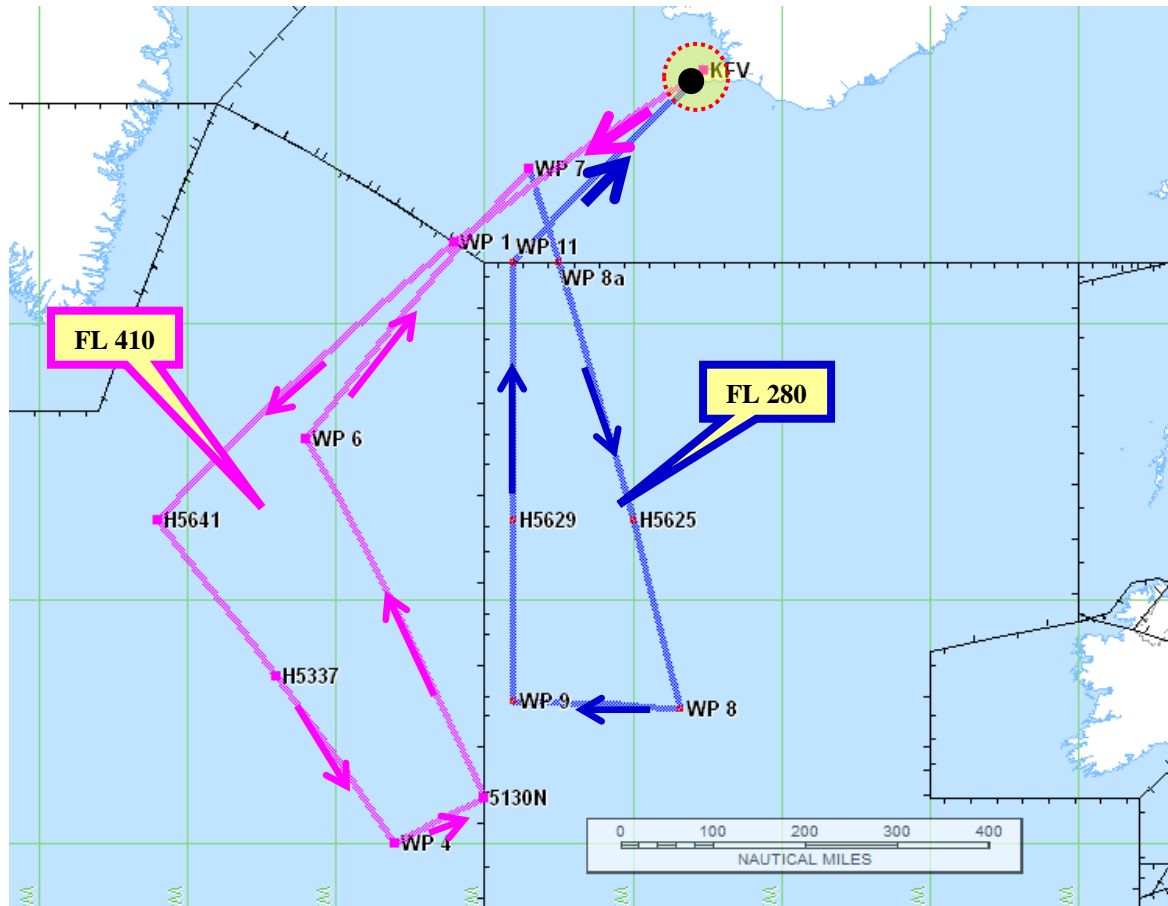


**D-ADLR – Atmospheric Research Flight „NAWDEX“ Campaign**



Date of flight: **26-Sept.-2016**

Callsign: **D-ADLR**

Type of Aircraft: GLF5

Departure Aerodrome: BIKF

Destination Aerodrome: BIKF

Alternate Aerodromes: BIAR, BIRK

Takeoff Time: 10:00 UTC

Total EET: 09h10

**Requested Routing:**

DCT 6120N031W DCT 5630N041W DCT  
5330N037W DCT 50N033W DCT 51N030W DCT  
58N036W DCT 6230N02830W/M063F280 DCT  
61N02730W DCT 5630N025W DCT  
5250N02325W DCT 53N029W DCT 5630N029W  
DCT 61N029W DCT KfV

**Remarks:**

**Request of dropping meteorological sondes  
from FL280 between WP 8a and WP 11  
(exact positions depending on actual weather  
situation)**

6120N031W (WP 1) EET 0100

50N033W (WP 4) EET 0300

61N02730W (WP 8a) EET 0515 (15:15 UTC)

53N029W (WP 9) EET 0735

61N029W (WP 11) EET 0850