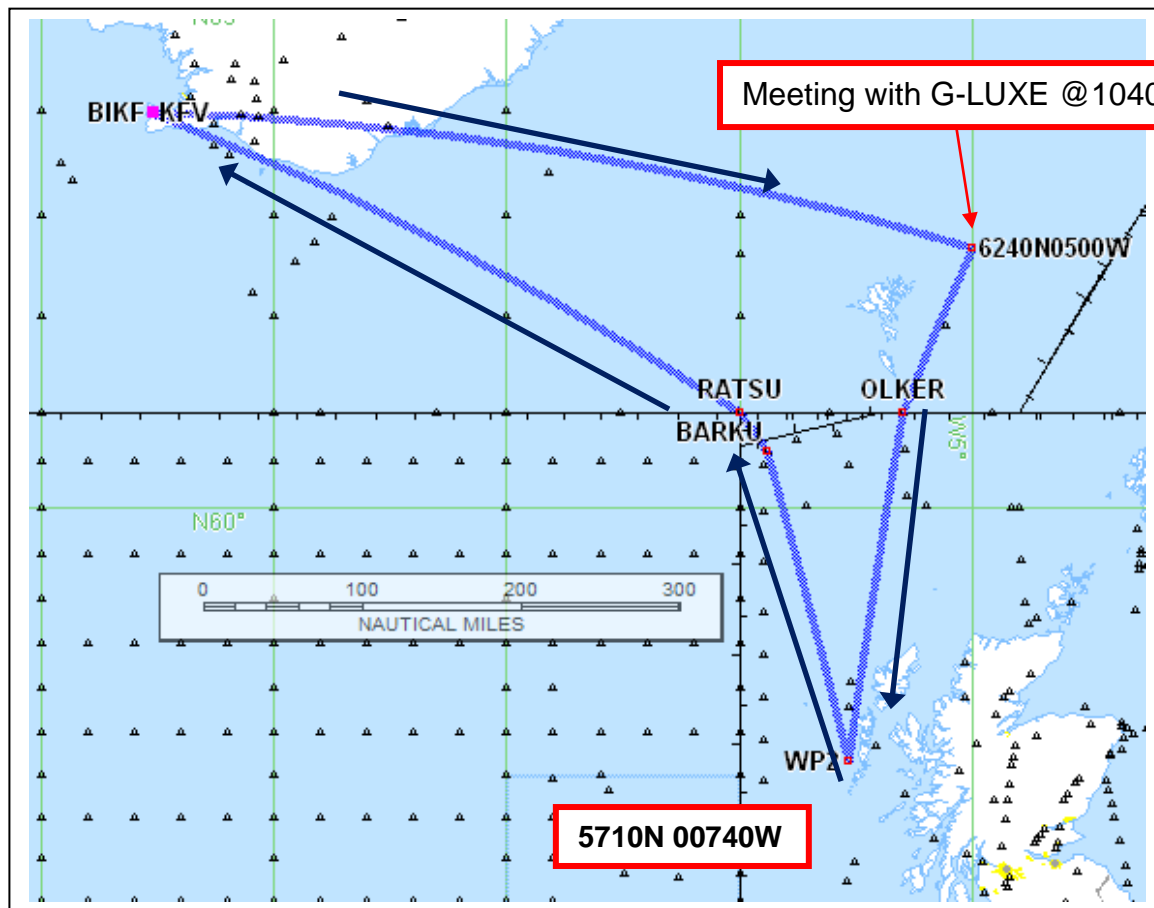


D-CMET – Meteorological Research Flight - „NAWDEX“ Campaign



Date of flight: **27 SEPT 2016**

Callsign: **D-CMET**
Type of Aircraft: FA20

Departure Aerodrome: BIKF
Destination Aerodrome: BIKF
Alternate Aerodrome : BIAR

Takeoff: 0920z
EET: 3h45m
Flight level: FL380

Routing

KFU
DCT 6240N00500W (WP1)
DCT OLKER
DCT 5710N00740W (WP2)
DCT BARKU UN610 RATSU
DCT KFU

Remarks:

Rendevouz with G-LUXE ovhd WP1
(6240N00500W) at 1040z