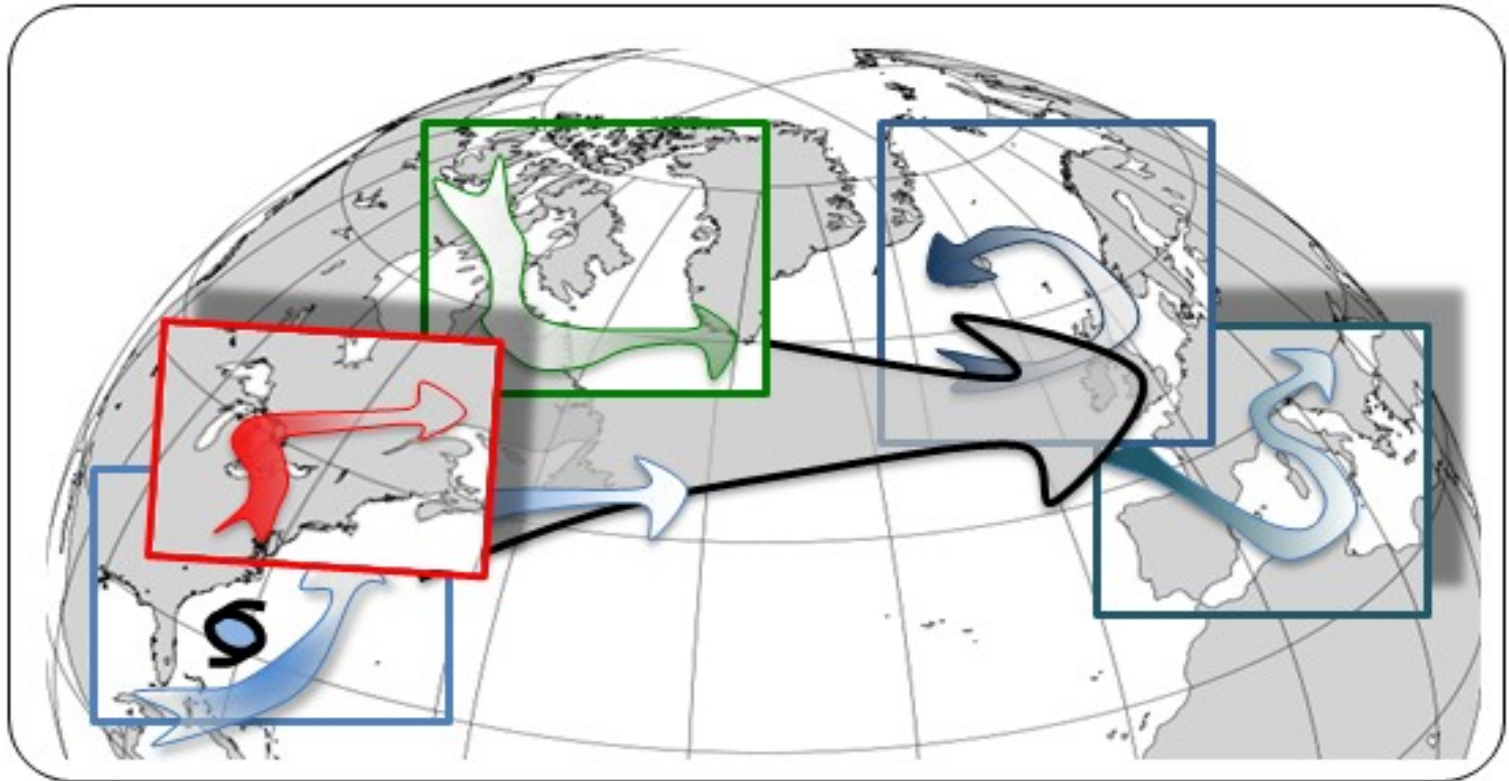


# NAWDEX – General Planning Meeting

27 September 2016, Keflavik 11 UTC



# NAWDEX – General Planning Meeting

27 September 2016, Keflavik 11 UTC

## Key issues today

1. Today's HALO/Falcon/UK FAAM flights
2. Possible Falcon calibration flight on Wednesday
3. Additional Radiosondes requested (Tue-Sat) for high impact weather event over Northern Europe (Thu-Sat)
4. Down-day discussion for aircraft

# NAWDEX – General Planning Meeting

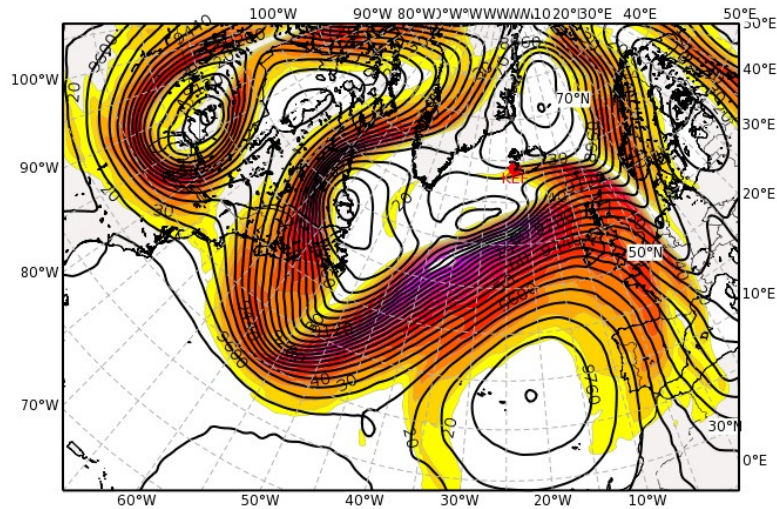
27 September 2016, Keflavik 11 UTC

1. Report from Monday's Halo flight
2. Current Falcon and HALO flight
3. Aircraft status report by FX-Operations
4. Instrument status report by Instrument Manager
5. Short weather summary: information about flight options for the next days and update for planning for the next day with the latest forecast
6. Report of Ground-Based Observation coordinator
7. Falcon calibration flight for Wednesday
8. Coordination with other aircraft (Input from other groups)

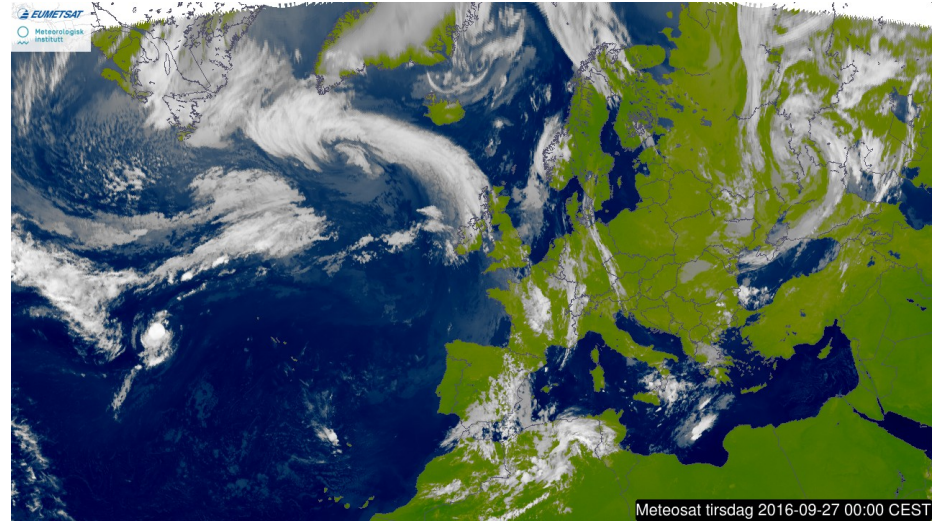
# Analysis – 27 Sep 2016, 00 UTC

Geopotential Height (m) & Horizontal Wind (m/s) at 300 hPa

Valid: Tue, 27 Sep 2016, 00 UTC (step 000 h from Tue, 27 Sep 2016, 00 UTC)

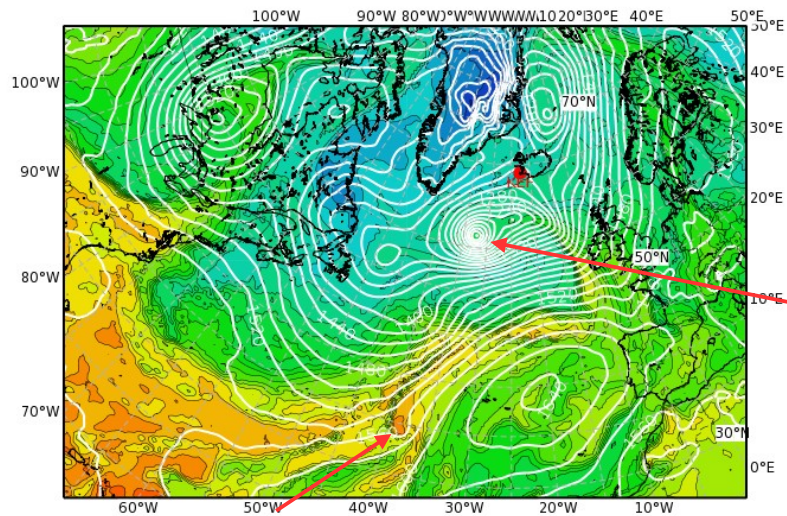


Z300, SAT  
THE850, RH700



Equivalent Potential Temperature (degC) & Streamlines at 850 hPa

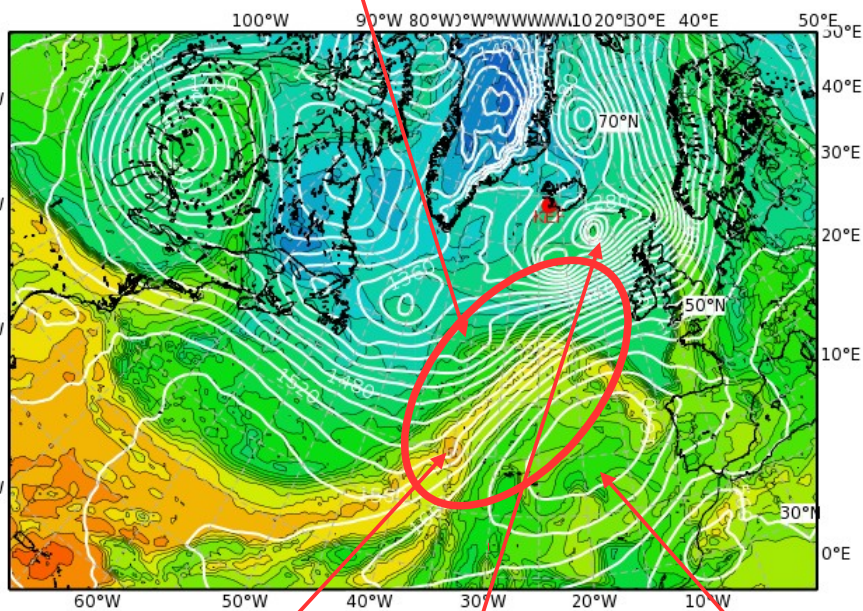
Valid: Tue, 27 Sep 2016, 00 UTC (step 000 h from Tue, 27 Sep 2016, 00 UTC)



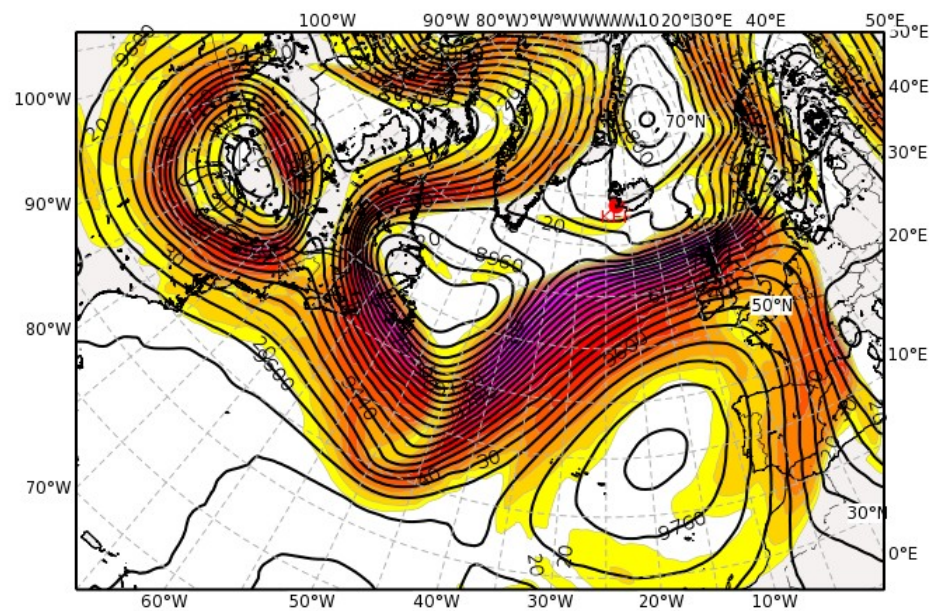


## New cyclone

Equivalent Potential Temperature (degC) & Streamlines at 850 hPa  
Valid: Tue, 27 Sep 2016, 12 UTC (step 012 h from Tue, 27 Sep 2016, 00 UTC)



Geopotential Height (m) & Horizontal Wind (m/s) at 300 hPa  
Valid: Tue, 27 Sep 2016, 12 UTC (step 012 h from Tue, 27 Sep 2016, 00 UTC)



Lisa

ex-Karl

Strong moisture transport

Cloudiness Greenland:



Cloudiness Iceland:

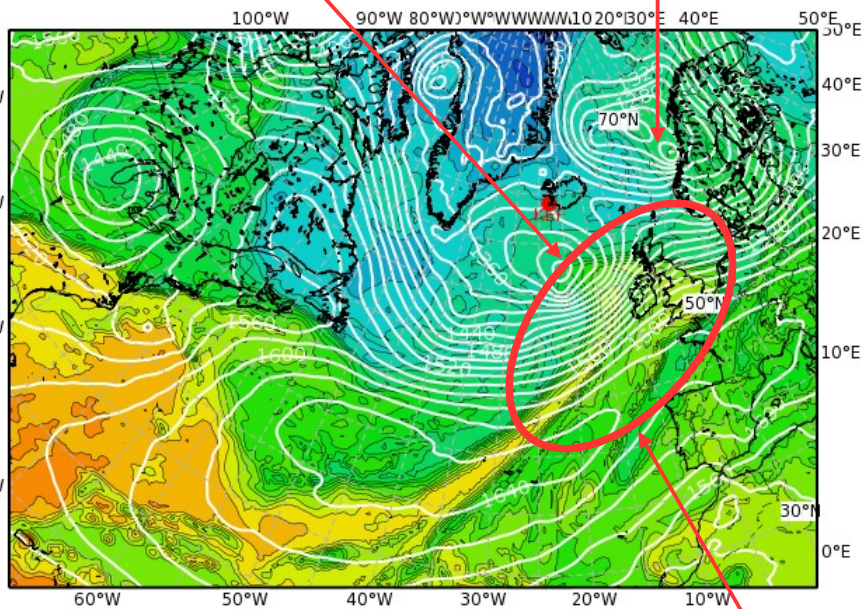




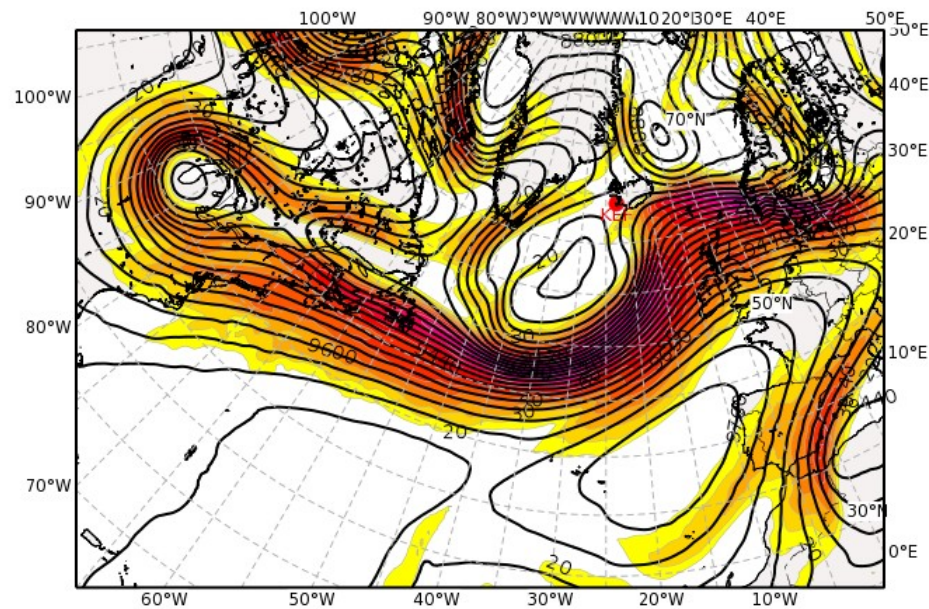
New cyclone

ex-Karl

Equivalent Potential Temperature (degC) & Streamlines at 850 hPa  
Valid: Wed, 28 Sep 2016, 12 UTC (step 036 h from Tue, 27 Sep 2016, 00 UTC)



Geopotential Height (m) & Horizontal Wind (m/s) at 300 hPa  
Valid: Wed, 28 Sep 2016, 12 UTC (step 036 h from Tue, 27 Sep 2016, 00 UTC)



Strong moisture transport

Cloudiness Greenland:



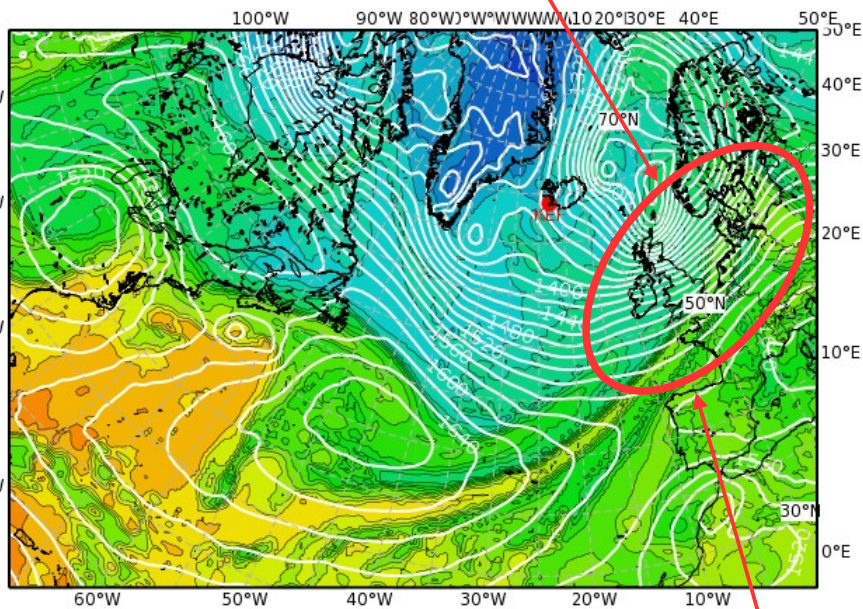
Cloudiness Iceland:





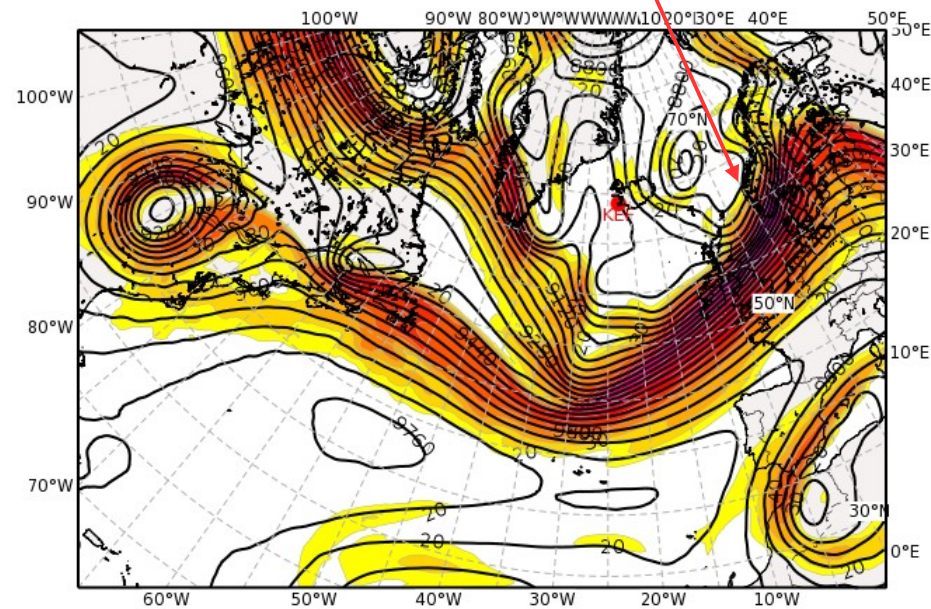
## New cyclone

Equivalent Potential Temperature (degC) & Streamlines at 850 hPa  
Valid: Thu, 29 Sep 2016, 12 UTC (step 060 h from Tue, 27 Sep 2016, 00 UTC)



## Upper-level trough

Geopotential Height (m) & Horizontal Wind (m/s) at 300 hPa  
Valid: Thu, 29 Sep 2016, 12 UTC (step 060 h from Tue, 27 Sep 2016, 00 UTC)



## Strong moisture transport

Cloudiness Greenland:

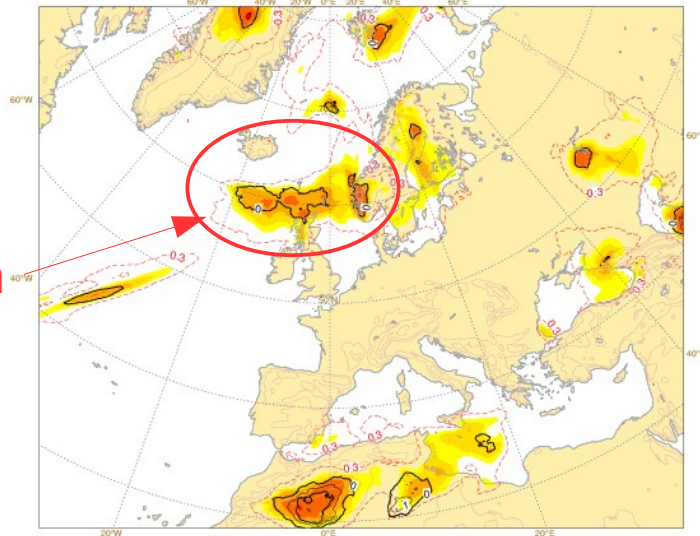


Cloudiness Iceland:

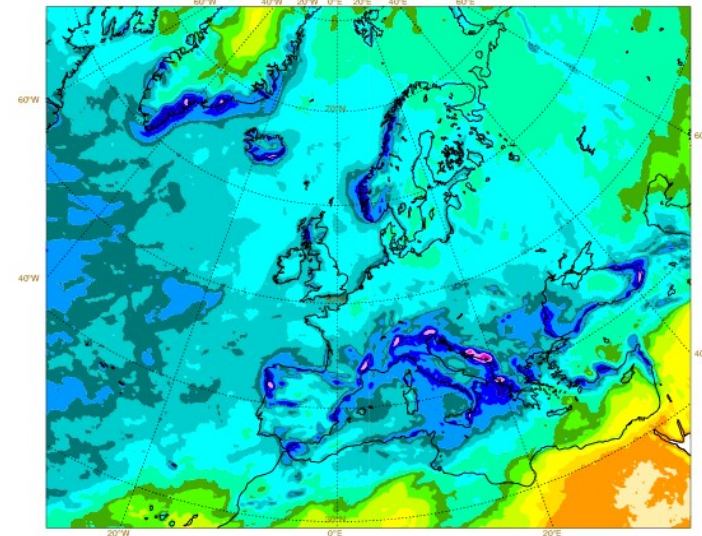
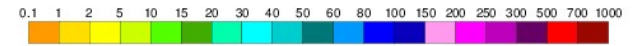




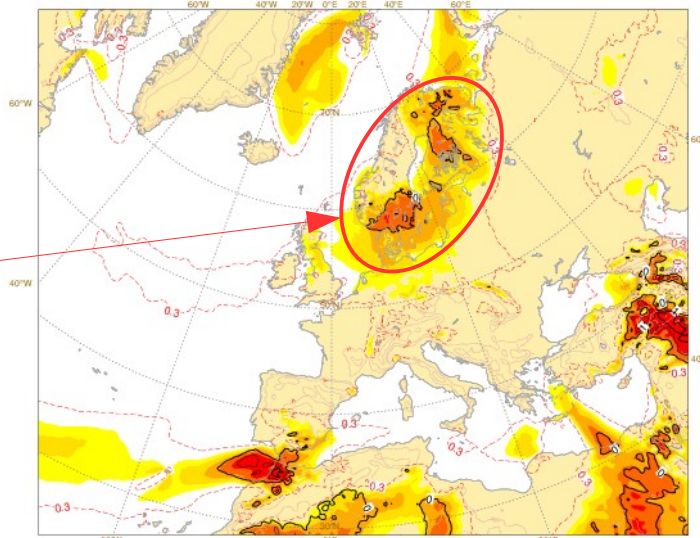
Tue 27 Sep 2016 00UTC @ECMWF t+0-72h VT: Tue 27 Sep 2016 00UTC - Fri 30 Sep 2016 00UTC  
Extreme forecast index and Shift of Tails (black contours 0,1,2,5,8) for total precipitation



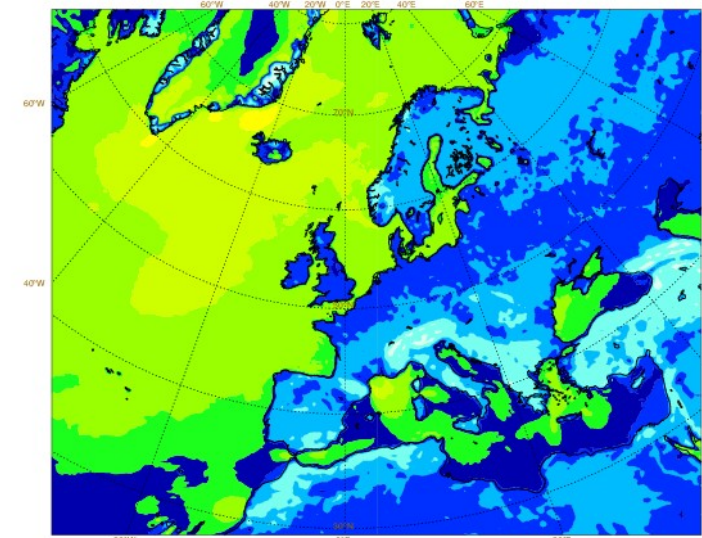
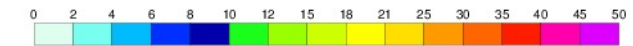
Mon 26 Sep 2016 00UTC @ECMWF VT: Tue 27 Sep 2016 00UTC - Fri 30 Sep 2016 00UTC 0-72h  
total precipitation (in mm) Model climate Q99 (one in 100 occasions realises more than value shown)



Tue 27 Sep 2016 00UTC @ECMWF t+24-96h VT: Wed 28 Sep 2016 00UTC - Sat 01 Oct 2016 00UTC  
Extreme forecast index and Shift of Tails (black contours 0,1,2,5,8) for 10m wind speed



Mon 26 Sep 2016 00UTC @ECMWF VT: Wed 28 Sep 2016 00UTC - Sat 01 Oct 2016 00UTC 24-96h  
10m wind speed (in m/s) Model climate Q99 (one in 100 occasions realises more than value shown)

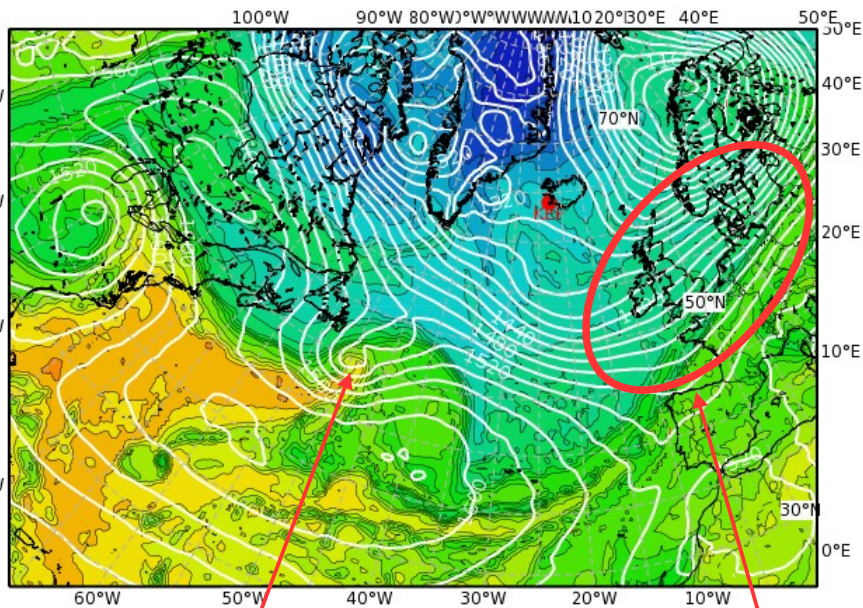




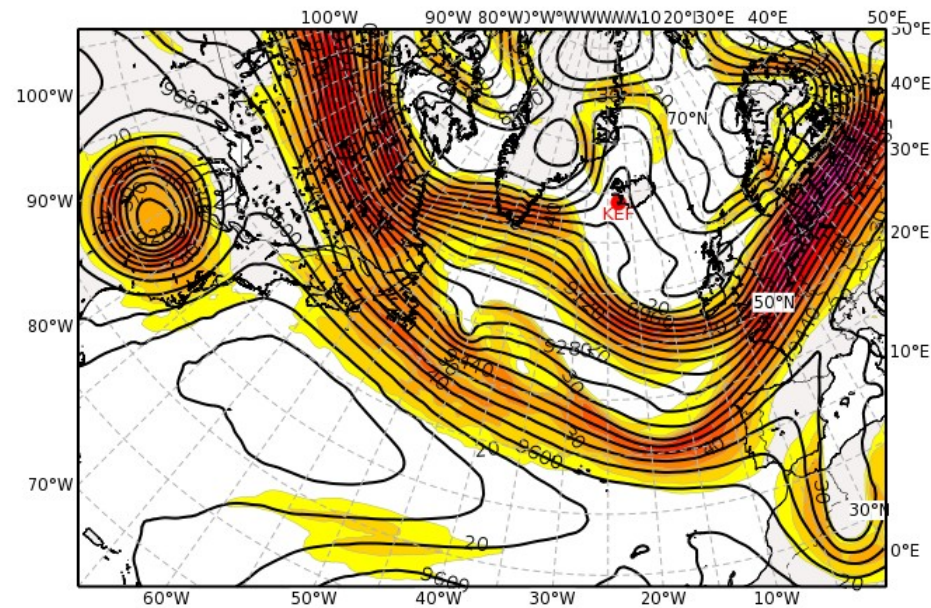
# Forecast for Fri, 30 Sep 2016 12 UTC

THE850, Z300 BT26/00Z

Equivalent Potential Temperature (degC) & Streamlines at 850 hPa  
Valid: Fri, 30 Sep 2016, 12 UTC (step 084 h from Tue, 27 Sep 2016, 00 UTC)



Geopotential Height (m) & Horizontal Wind (m/s) at 300 hPa  
Valid: Fri, 30 Sep 2016, 12 UTC (step 084 h from Tue, 27 Sep 2016, 00 UTC)



New cyclone

Strong moisture transport

Cloudiness Greenland:



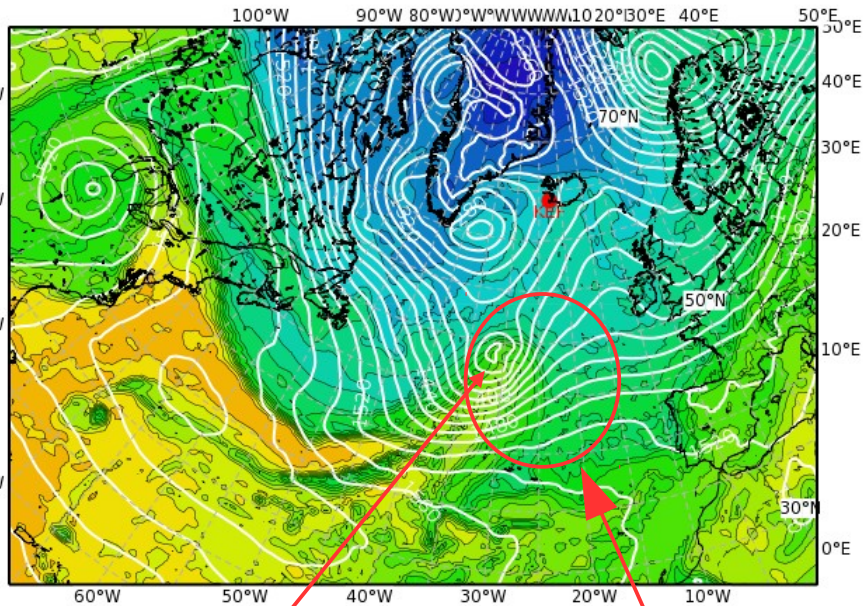
Cloudiness Iceland:



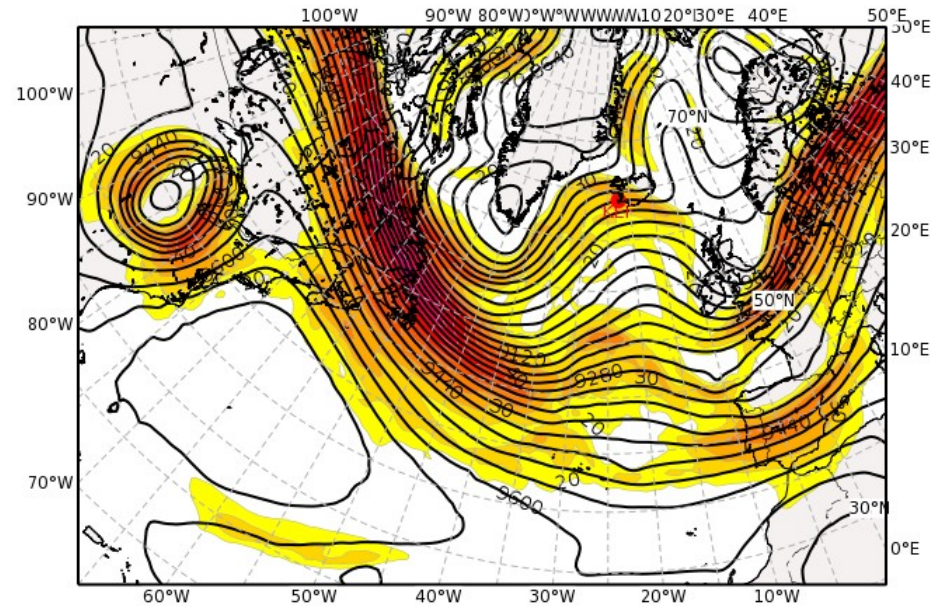
# Forecast for Fri, 30 Sep 2016 12 UTC

THE850, Z300 BT26/00Z

Equivalent Potential Temperature (degC) & Streamlines at 850 hPa  
Valid: Sat, 01 Oct 2016, 12 UTC (step 108 h from Tue, 27 Sep 2016, 00 UTC)



Geopotential Height (m) & Horizontal Wind (m/s) at 300 hPa  
Valid: Sat, 01 Oct 2016, 12 UTC (step 108 h from Tue, 27 Sep 2016, 00 UTC)



New cyclone WCB inflow region

Cloudiness Greenland:



Cloudiness Iceland:

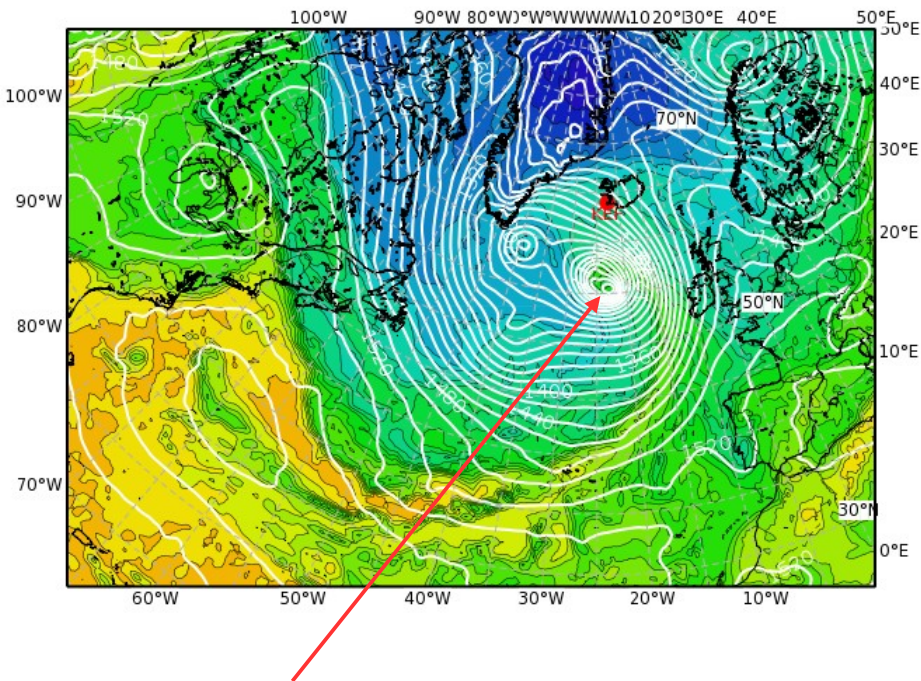




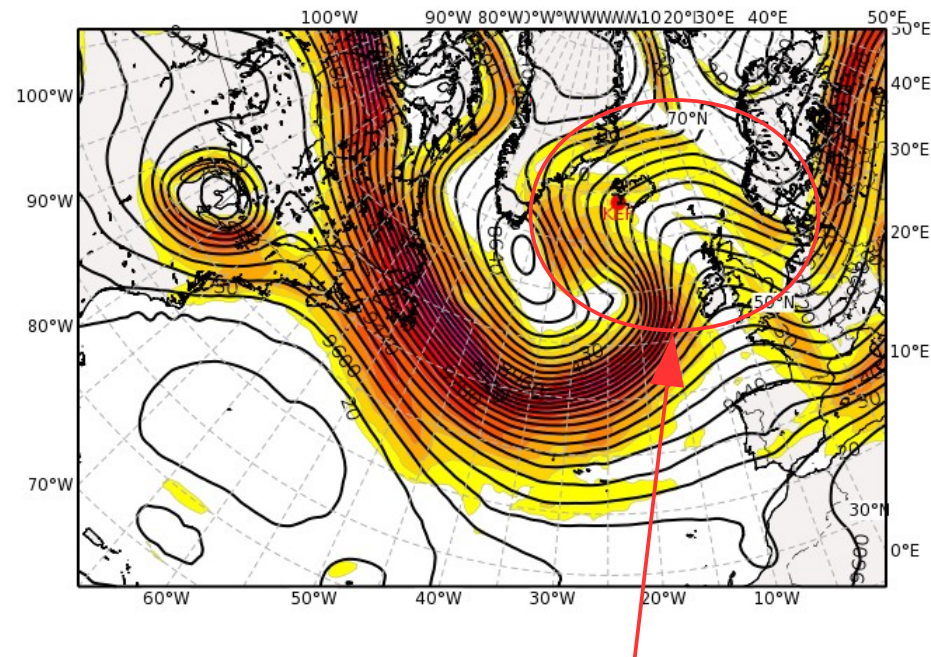
# Forecast for Fri, 30 Sep 2016 12 UTC

THE850, Z300 BT26/00Z

Equivalent Potential Temperature (degC) & Streamlines at 850 hPa  
Valid: Sun, 02 Oct 2016, 12 UTC (step 132 h from Tue, 27 Sep 2016, 00 UTC)



Geopotential Height (m) & Horizontal Wind (m/s) at 300 hPa  
Valid: Sun, 02 Oct 2016, 12 UTC (step 132 h from Tue, 27 Sep 2016, 00 UTC)



**WCB outflow region**

Cloudiness Greenland:



Cloudiness Iceland:

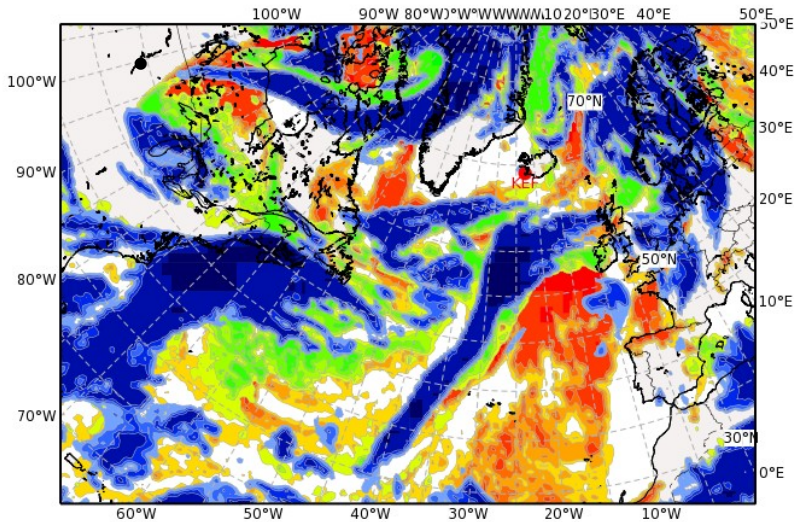




# Falcon calibration flight

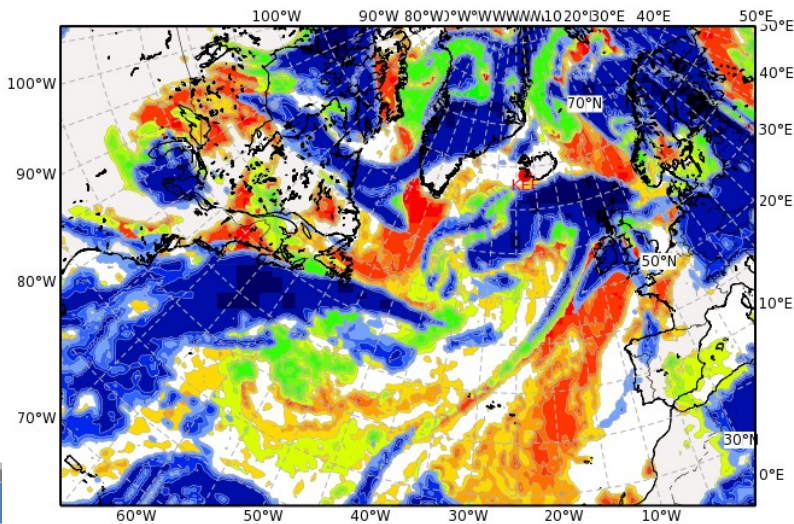
Total Cloud Cover

Valid: Wed, 28 Sep 2016, 00 UTC (step 024 h from Tue, 27 Sep 2016, 00 UTC)



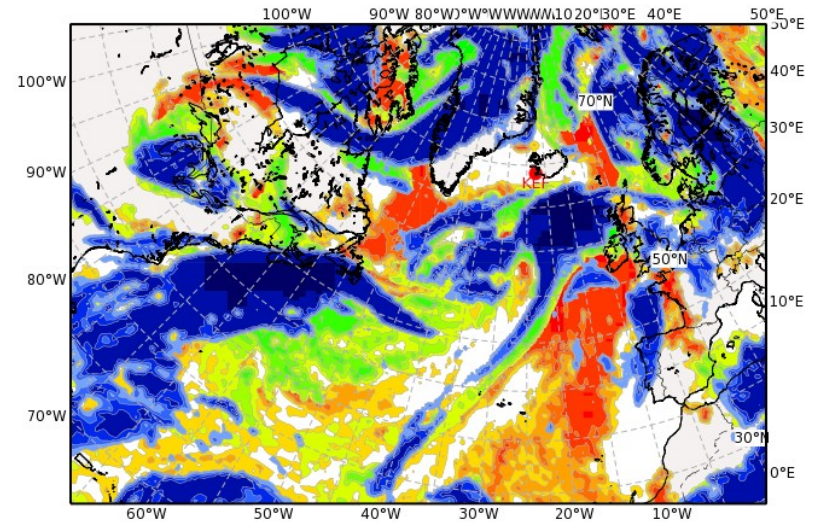
Total Cloud Cover

Valid: Wed, 28 Sep 2016, 12 UTC (step 036 h from Tue, 27 Sep 2016, 00 UTC)



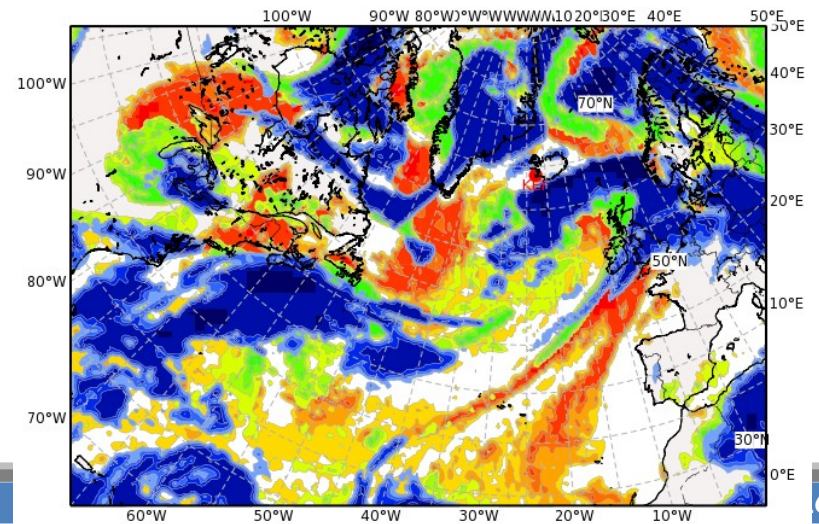
Total Cloud Cover

Valid: Wed, 28 Sep 2016, 06 UTC (step 030 h from Tue, 27 Sep 2016, 00 UTC)



Total Cloud Cover

Valid: Wed, 28 Sep 2016, 18 UTC (step 042 h from Tue, 27 Sep 2016, 00 UTC)





# Summary

- Falcon calibration flight on Wednesday
- HALO down-day on Wednesday
- Falcon down-day on Thursday
- Possible HALO flight on Saturday into WCB inflow region
- Possible HALO/Falcon flights on Sunday into WCB outflow region
- No general planning meeting tomorrow.