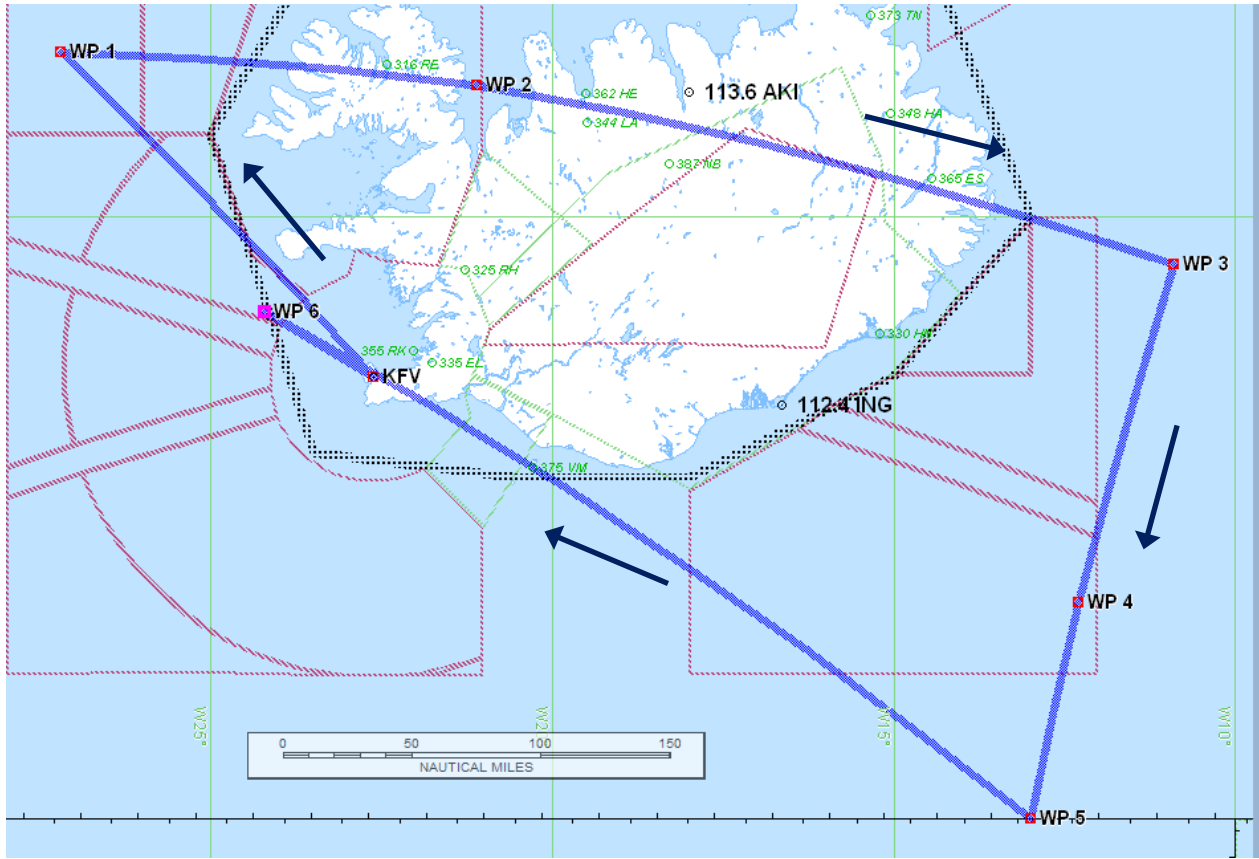


D-CMET – Meteorological Research Flight - „NAWDEX“ Campaign



Date of flight: **09 OCT 2016**

Callsign: **D-CMET**

Type of Aircraft: FA20

Departure Aerodrome: BIKF
 Destination Aerodrome: BIKF
 Alternate Aerodrome : BIAR

Takeoff: 1520z
 EET: 3h15m (1178NM)

Requested Flight levels FL360, M.74
 FL380 after WP3

Routing

DCT
 6600N02712W DCT (WP1)
 6548N02106W DCT (WP2)
 6442N01054W DCT (WP3)
 6230N01218W DCT (WP4)
 6100N01300W DCT (WP5)
 6424N02412W DCT (WP6)
 KfV

Remarks

meet with DADLR at 1745 @ WP5