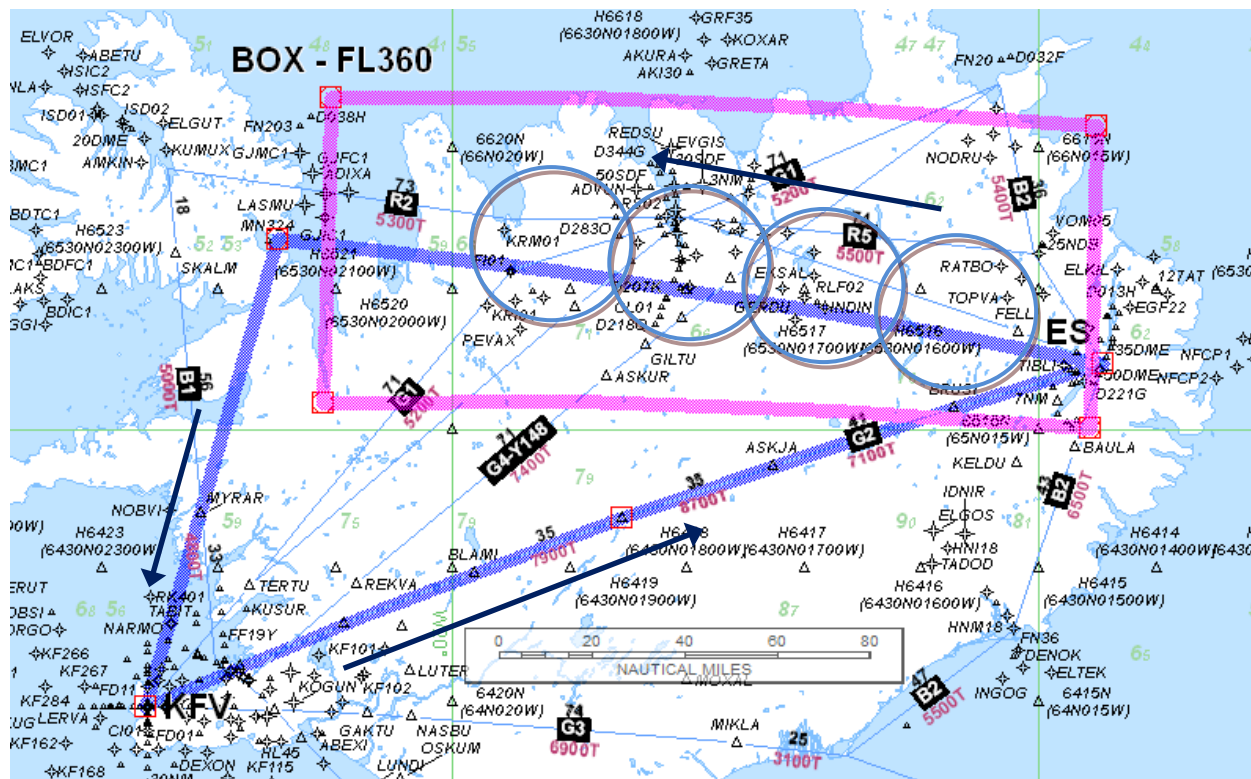


D-CMET – Meteorological Research Flight - „NAWDEX“ Campaign



Date of flight: **15 Oct 2016**

Callsign: **D-CMET**

Type of Aircraft: **FA20**

Departure Aerodrome: **BIKF**

Destination Aerodrome: **BIKF**

Alternate Aerodrome : **BIAR**

Takeoff: **1000z**

EET: **3h30m**

Requested Flight levels **btn FL350 and FL380**

Routing

KFV G2 ES STAY in BOX
6530N02130W
MYRAR DCT KFV

Remarks:

ETA MOXAL 1000z

Request to circle within designated box for appx 2h20.

Circle (~30 minutes) in FL 360

Box Coordinates:

- 6515N02100W (NW corner)
- 6615N01430W (NE corner)
- 6500N01430W (SE corner)
- 65N021W (SW corner)