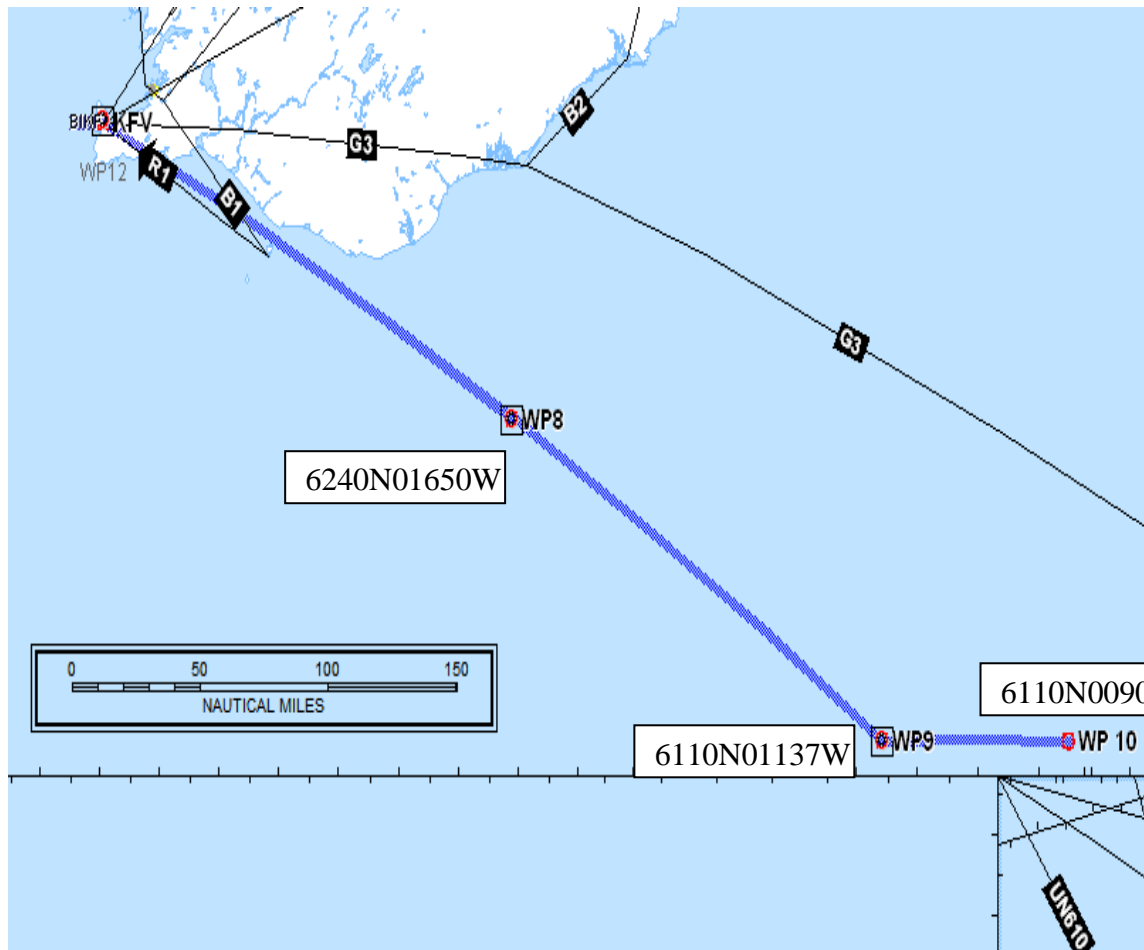


D-CMET – Meteorological Research-Flight NAWDEX Project



Date of flight: **23-Sept-2016**

Callsign: **D-CMET**

Type of Aircraft: **FA 20**

Departure Aerodrome: **BIKF**

Destination Aerodrome: **BIKF**

Takeoff Time: **0650 UTC**

ETA **1000 UTC**

ETE **03:10 hrs**

Distance **1200 NM**

Cruising Level

initially FL360 later FL380

Planned Routing

DCT 6240N01650W (WP8)

DCT KFU

DCT 6110N01137W (WP9)

DCT 6110N00900W (WP10)

DCT 6110N01137W (WP9)

DCT KFU

Meeting D-CMET/D-ADLR @0750UT @ KFU