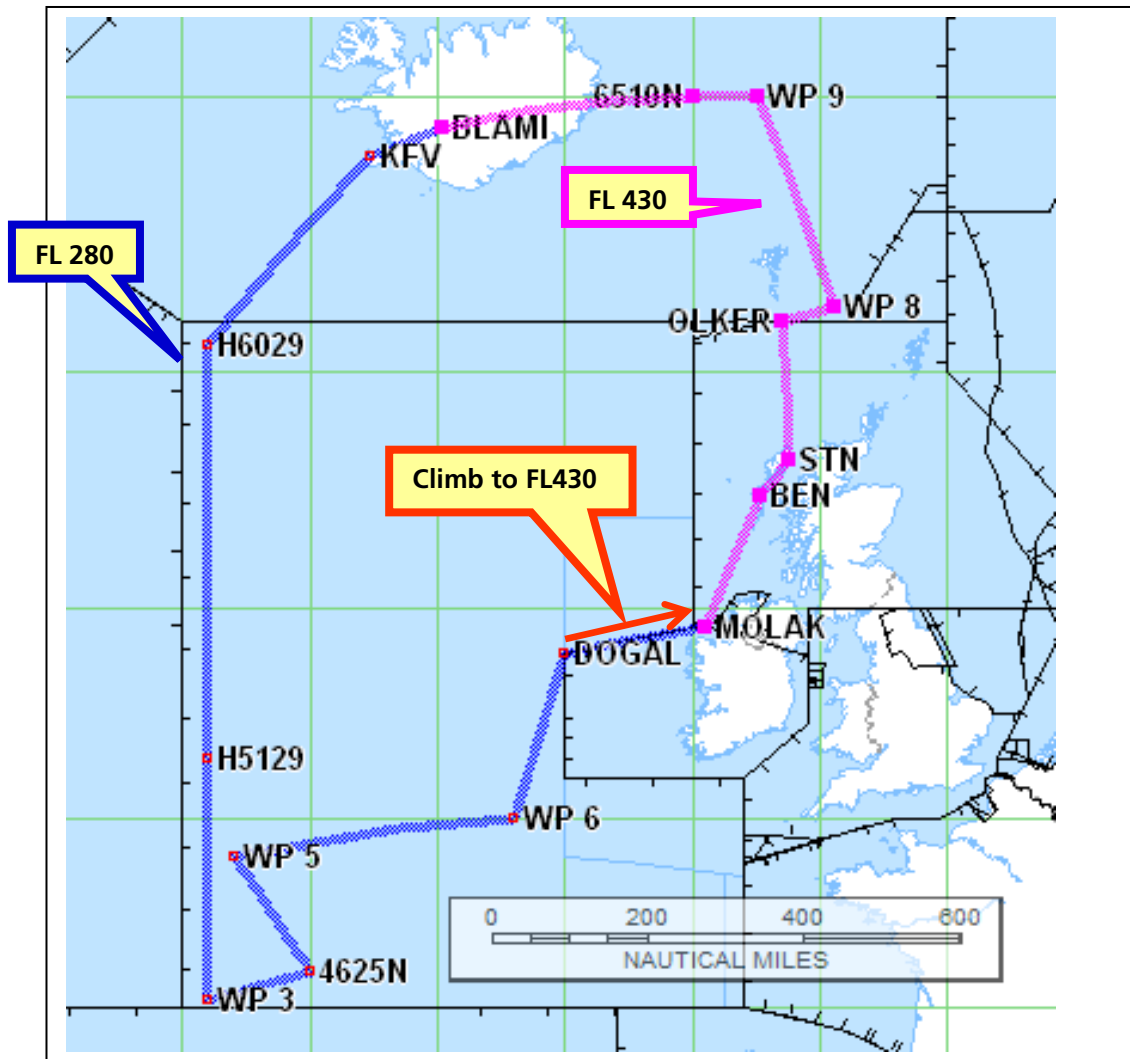


D-ADLR – Atmospheric Research Flight „NAWDEX“ Campaign



Date of flight: **27-Sept.-2016**

Callsign: **D-ADLR**

Type of Aircraft: GLF5

Departure Aerodrome: BIKF

Destination Aerodrome: BIKF

Alternate Aerodromes: BIAR, BIRK

Takeoff Time: 11:30 UTC

Total EET: 09h15

Requested Routing:

DCT H6029 H5129 4510N029W 4625N
49N028W 50N017W DOGAL MOLAK BEN STN
UN614 OLKER 6115N00430W 65N00725W
6510N BLAMI DCT KFY

Remarks:

**Request of dropping meteorological sondes
from FL280 between H6029 and DOGAL
(Shanwick)**

AND

from FL430 from WP 8 to 6510N (Reykjavik)

**(exact positions depending on actual weather
situation)**

H6029 EET 0050

4510N029W (WP 3) EET 0330

DOGAL EET 0630

6115N00430W (WP 8) EET 0800