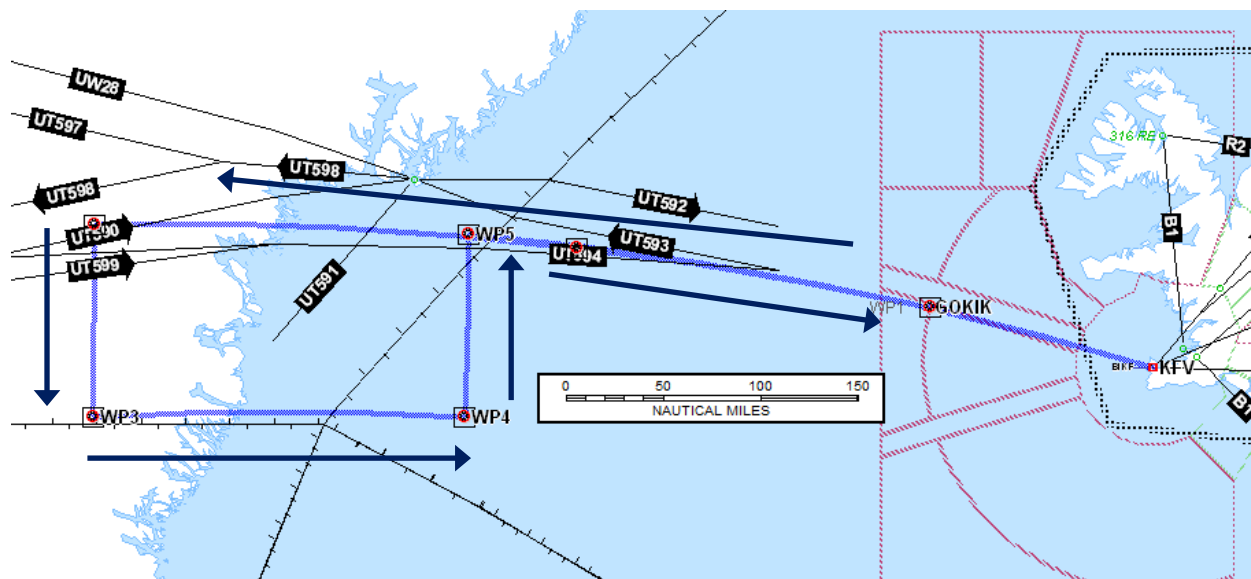


D-CMET – Meteorological Research Flight - „NAWDEX“ Campaign



Date of flight: **02 OCT 2016**

Callsign: **D-CMET**

Type of Aircraft: FA20

Departure Aerodrome: BIKF

Destination Aerodrome: BIKF

Alternate Aerodrome : BIAR

Takeoff: 0820z

EET: 3h30m

Requested Flight levels FL360, M.72

Routing

KFV DCT GOKIK DCT 6500N03400W DCT
6512N04330W DCT 6333W04333W DCT
6333N03612W DCT 6507N03607W DCT GOKIK
DCT KFV

Remarks:

F-GBTM follows at FL360 until WP-3 with 10 minutes separation, after WP-3 they will head directly back to BIKF on FL370