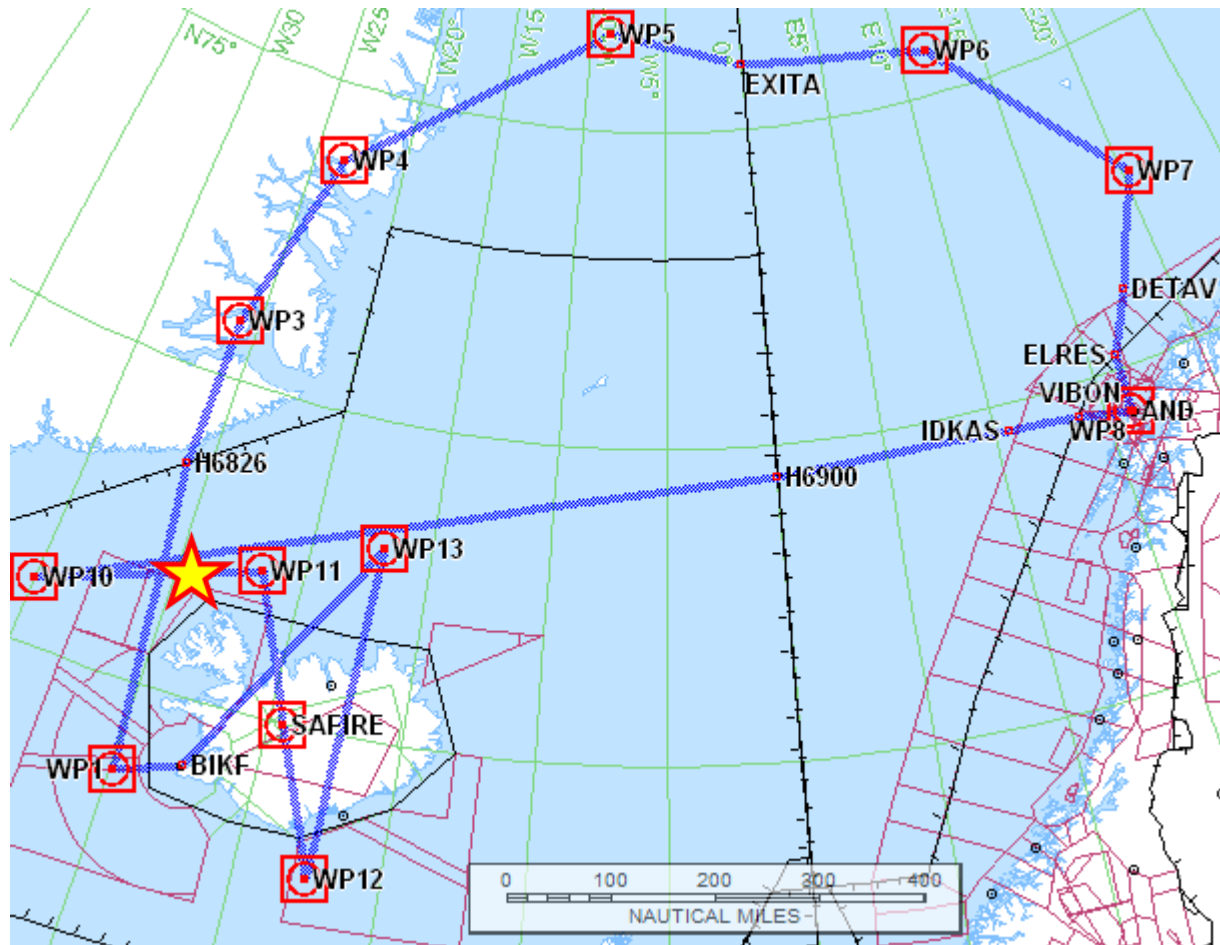


## D-ADLR – Atmospheric Research Flight „NAWDEX“ Campaign



Deutsches Zentrum  
für Luft- und Raumfahrt e.V.  
in der Helmholtz-Gemeinschaft



Date of flight: **13-October-2016**

Callsign: **D-ADLR**

Type of Aircraft: GLF5

Departure Aerodrome: BIKF

Destination Aerodrome: BIKF

Alternate Aerodromes: BIAR, BIRK

Takeoff Time: 08:00

Total EET: 08h45

### Requested Routing:

KEF DCT 6336N02454W DCT 6830N026W DCT  
7054N02554W DCT 7348N02318W DCT  
7630N00836W DCT EXITA DCT 7542N01142E DCT  
7248N02018E DCT DETAV DCT ELRES DCT AND DCT  
VIBON DCT IDKAS DCT 6930N000E DCT 66N030W  
DCT 6715N02142W 6241N01729W DCT 68N017W  
DCT KEF

### Remarks:

Request dropping 5 Met probes between WP10 and WP11 radar coverage out of FL430.  
During the whole flight Met probes will be requested individually.



### EET:

BGGL0048

ENOB0225

BIRD0434