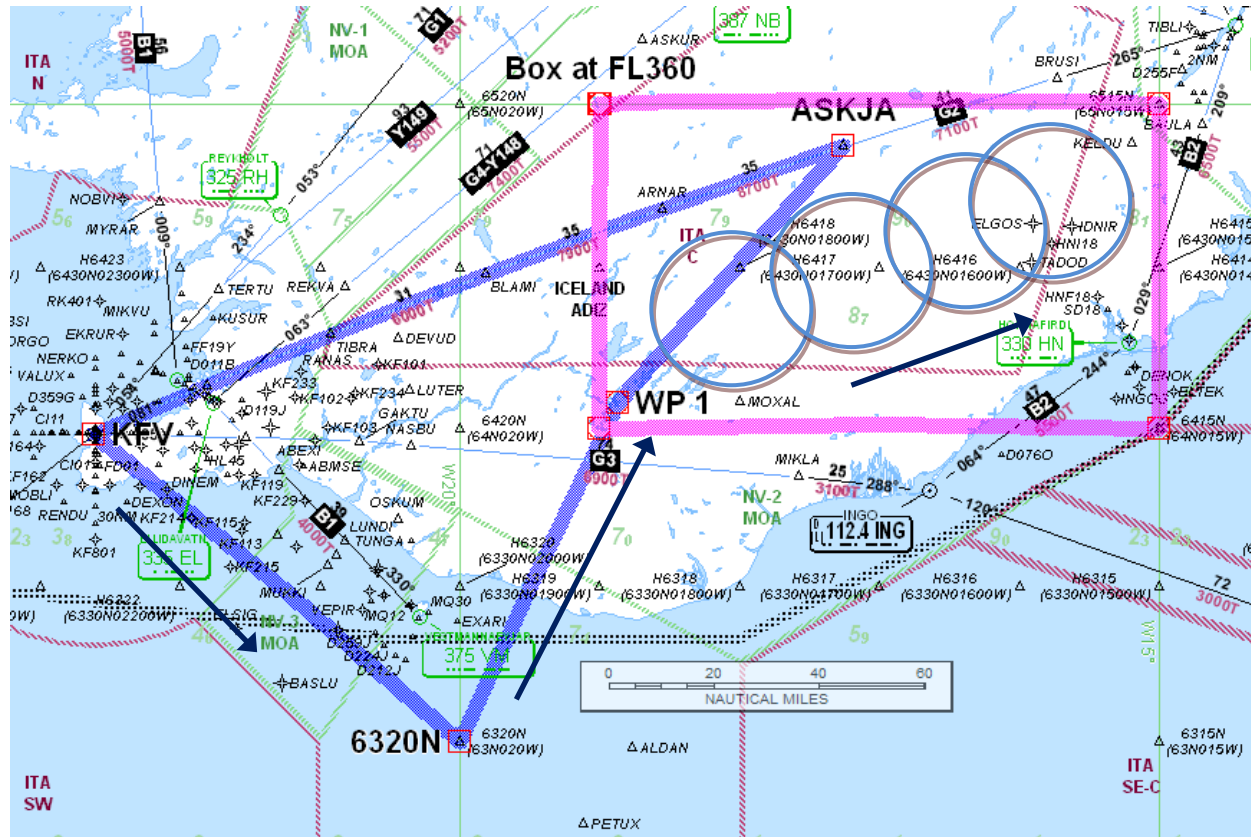


D-CMET – Meteorological Research Flight - „NAWDEX“ Campaign



Date of flight: **15 Oct 2016**

Callsign: **D-CMET**

Type of Aircraft: **FA20**

Departure Aerodrome: **BIKF**

Destination Aerodrome: **BIKF**

Alternate Aerodrome : **BIAR**

Takeoff: **1430z**

EET: **3h30m**

Requested Flight levels **btn FL350 and FL380**

Routing
 KFY 63N020W 64N019W STAY in BOX
 ASKJA G2 KFY

Remarks:
 Request to circle within designated box for appx 2h20.

Circle (~25 minutes) in FL 360

Box Coordinates:
 65N019W (NW corner)
 65N015W (NE corner)
 64N015W (SE corner)
 64N019W (SW corner)